



IDEAL NETWORKS



# LanTEK III | FiberTEK III

Certifier for Copper and Fibre Cabling

 **BLUE  
HELIX**  
Your network needs...  
...our solutions

BLUE HELIX  
SOUTH CORNER, OLD BRIGHTON ROAD,  
CRAWLEY, WEST SUSSEX RH11 0PH  
TEL: +44 (0)1293 528888  
FAX: +44 (0)1293 528890  
EMAIL: SALES@BLUEHELIX.CO.UK  
WEB: WWW.BLUEHELIX.CO.UK

## LanTEK III | FiberTEK III

Certifier for Copper  
and Fibre Cabling

The LanTEK III is an easy to use cable certifier that meets existing TIA and ISO/IEC performance requirements for testing up to Cat. 7A/1000MHz. FiberTEK III adapters are used with LanTEK III for fast and simple certification of high bandwidth single-mode and multimode fibre optic cabling including support for encircled flux testing.



### Test data when you want it, where you want it

Using the free IDEAL AnyWARE app, field technicians can share test data with colleagues or customers without leaving the jobsite, resulting in greater collaboration, more on-time job completions and reduced costs.

### New troubleshooting features that save time and money

Should a cable prove to be faulty, troubleshooting is easy with the introduction of Time Domain Return Loss (TDRL) and Time Domain Near End Cross Talk (TDNEXT) measurements.

To pinpoint fibre cabling faults every FiberTEK III adapter includes a built-in visible light source to help you visually pinpoint faults and locate fibre ports.

These additional features help locate hidden connections, splices and cable faults and can save many hours previously spent troubleshooting problems on the job.

### New permanent link (PL) adapter saves money

New PL adapters reduce down time and lower maintenance costs with field replaceable RJ45 contacts that eliminate the need to replace the complete adapters. New PL adapters feature centred connectors to ensure compatibility with all brands of Cat. 6A/Class E<sub>A</sub> cabling solutions. The PL adapters use high performance, ultra-flexible cable that allows them to be used in confined spaces without damaging the PL adapter or the outlet being tested.

### Modular solution to reduce capital costs

For many cable installers there is pressure to reduce capital equipment costs. The LanTEK III and FiberTEK III uniquely offer a pick and mix solution of components, therefore you only pay for what you need. This includes a wide range of test modules, accessories and Careplans to satisfy your specific requirements.



#### Permanent Link Testing Modules

To test and certify UTP/STP cabling from the patch panel to the work area outlet. The RJ45 contacts on the tip of the Permanent Link Modules are field replaceable to reduce the cost of ownership.



#### Channel Testing Modules

Select from a wide range of Channel testing modules for various applications including: RJ45, GG45, TERA and EC7.



#### Fibre Optic Testing Modules

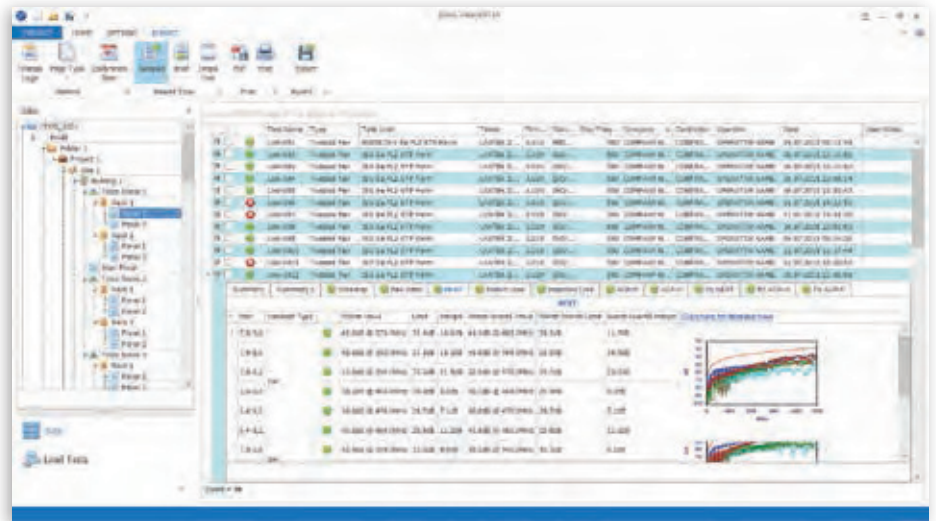
FiberTEK III modules offer fast and simple Tier 1 certification of high bandwidth single-mode and multimode fibre optic cabling including support for encircled flux testing.



# Efficient Data Management Software

IDEAL DataCENTER (IDC) is the free test result management software for the LanTEK III and FiberTEK III series of cable certifiers. IDC allows data cable installation professionals to easily download, manage, edit and print PDF reports. IDC offers a simple user interface with time saving features including:

- Microsoft ribbon toolbars for ease of use
- Only 4 button clicks to import data from the tester
- >10,000 results managed in a single job
- Professional reporting for your clients
- Ability to group and filter test results into categories including:
  - Test limits
  - Devices
  - Or any other data within the database

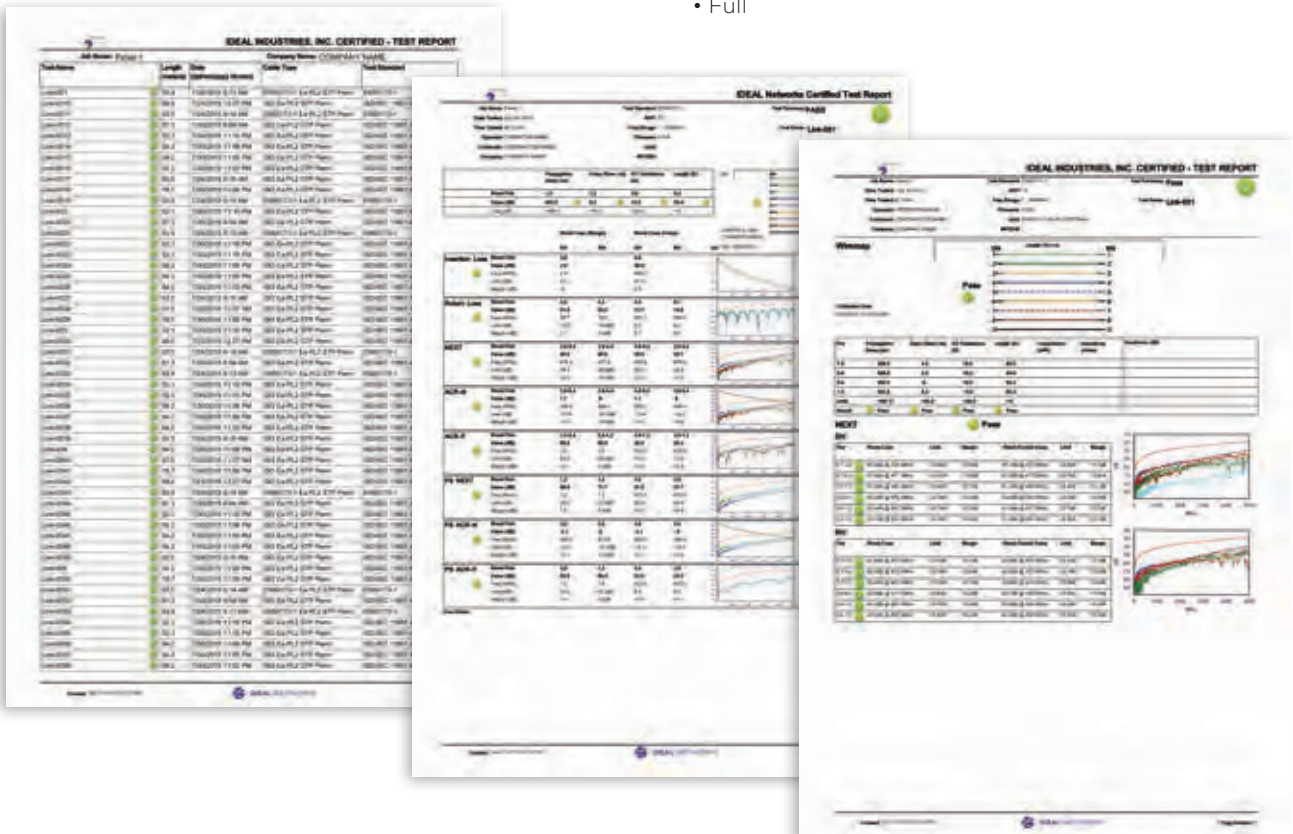


## Professional Reporting

Automatically generate test reports in PDF or CSV format. The summary page of each report can be customised to include logo, company and operator details.

Choose between 3 different reports that can show either passed, failed or all test results in each report:

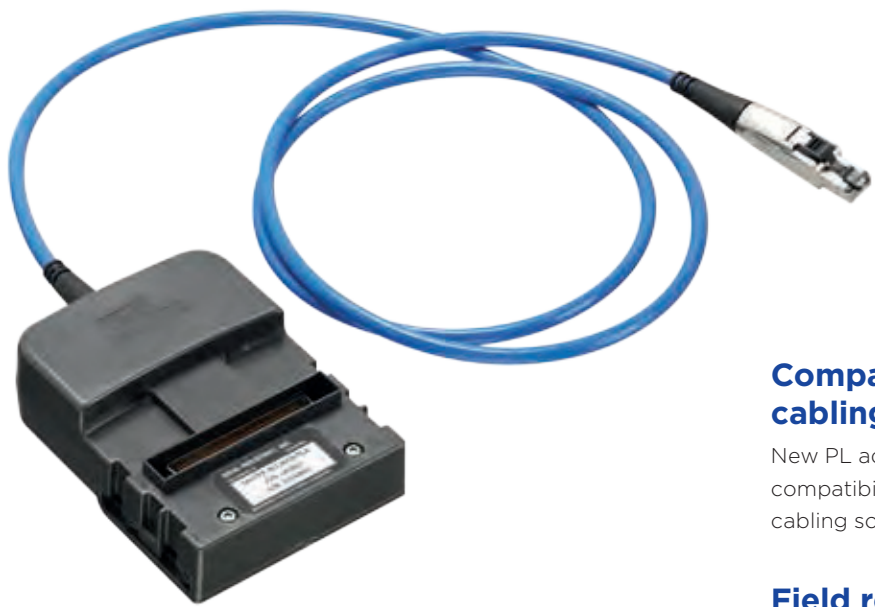
- Summary
- Brief
- Full



# New Permanent Link (PL) adapter

## Operates in the smallest enclosures

The PL adapters use high performance, ultra-flexible cable that allows them to be used in confined spaces without damaging the PL adapter or the outlet being tested.



## Compatible with all RJ45 cabling systems

New PL adapters feature centred connectors to ensure compatibility with all brands of Cat. 6A/ISO Class E<sub>A</sub> cabling solutions.

## Field replaceable tips that reduce downtime and maintenance costs

New PL adapters reduce down time and lower maintenance costs with field replaceable RJ45 tips that eliminate the need to replace the complete adapters.

To reduce costs the PL adapter tips provide almost three times as many insertions than a regular patch cord before tip replacement is required.

Through innovative design, the entire worn plug assembly is replaced with a completely new plug, contact and locking mechanism.

	IDEAL Networks' PL adapter tip (independently verified)	Regular RJ45 patch cord plug rated by ISO/TIA standards
Number of insertions before contacts are worn and replacement is required	2,000	750

The PL adapter tips can be changed in minutes with 3 simple steps shown below.



### Step 1

Remove screw

### Step 2

Slide off the old tip and replace with a new one

### Step 3

Replace screw

Send test data from anywhere using the free app



**IDEAL**  
AnyWARE



## Step 1

### Test

- Set up project
- Perform autotest on copper/fibre cabling

## Step 2

### Connect & Send

- Activate the LanTEK III wireless hotspot
- Connect your mobile device with the IDEAL AnyWARE app
- Transfer test data to your mobile device
- Send data using email or your preferred file sharing app

## Step 3

### Create PDF reports with IDC

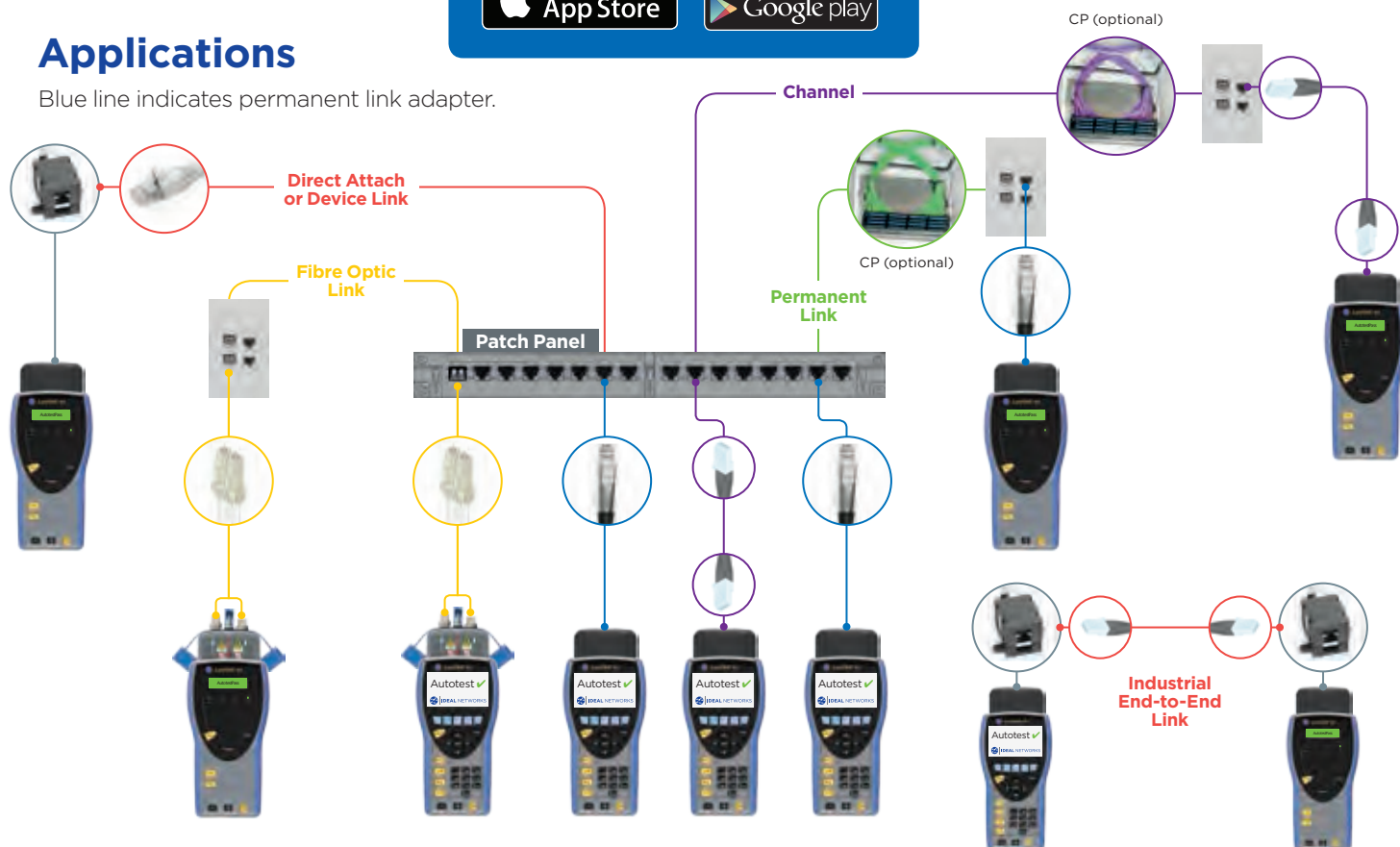
- Receive test data on your PC via email or file sharing method.
- Analyse and process data
- Create PDF reports

Download the FREE app today



## Applications

Blue line indicates permanent link adapter.





# LanTEK III

## Troubleshooting

Time Domain Return Loss (TDRL) and NEXT (TDX) to locate hidden connections, splices and cable faults

## Tone generator on both test units

Ability to identify and trace cables with a compatible amplifier probe (62-164)

## Autotest on both test units

Comprehensive test results within seconds. Allows one person testing

## Wiremap test button

Shortcut to quickly access wiremap results

## Talk Set

Talk to a colleague over copper or fibre links

## Independently verified

Accuracy verified by Intertek



## Rugged design

Rubberised housing, protected screen and protected measurement port

## Share test data

Provides mobile device connectivity using the USB Wi-Fi adapter and free IDEAL AnyWARE app



## Long life battery

18 hours continuous use in the field

## Replaceable Cat. 6A permanent link adapter tips

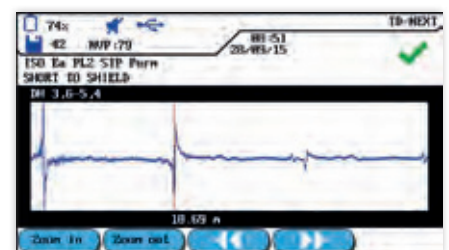
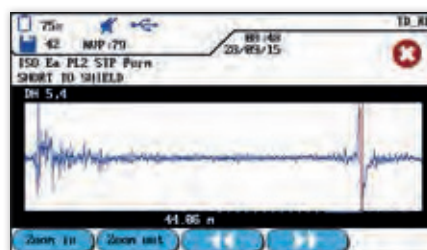
Reduces cost of ownership. Centred connectors provide minimal tolerance and are compatible with all RJ45 twisted pair cabling connectors (optional)



## New troubleshooting features that save time and money

Should a cable prove to be faulty, troubleshooting is easy with the introduction of Time Domain Return Loss (TDRL) and Time Domain Near End Cross Talk (TDNEXT) measurements. These additional features help locate hidden connections, splices and cable faults and can save many hours previously spent troubleshooting problems on the job.

## TDX - Example: Consolidation Point



# FiberTEK III

## Troubleshooting

Red laser light source to visually pinpoint faults and locate fibre ports

## Protected test ports

Attached covers protect ports, minimise contamination and will not be misplaced

## Supports all common connector types

SC, FC, ST adapters included.  
LC adapters optional

## Certification

Tier 1 certification of single-mode and multimode fibre optic cabling

## Encircled Flux compliance

Enables compliance to the new 2016 fibre standards IEC 14763-3 and ANSI/TIA- 526-14-C (optional accessory – see back page for details)

## Field calibration

Allows 1 and 3 jumper field calibration methods to ensure accuracy and compliance to IEC and ANSI/TIA standards

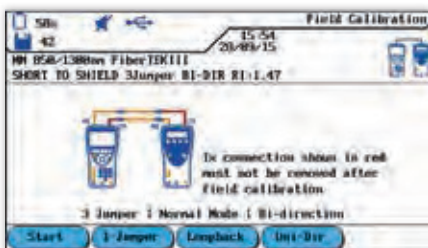
## Simplified bi-directional measurements

Eliminates process of manually merging directional tests into one record

## Complies with all international standards including TIA, ISO/IEC

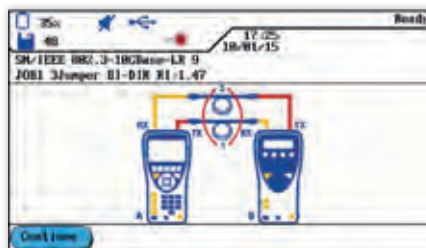
See website for full details

## Fibre certification wizard to simplify setup and testing



### Setup Wizard

Select field calibration (1-Jumper|3-Jumper) and measurement modes (Loopback|Normal), (Uni-Directional|Bi-Directional).



### Auto-test

Perform auto-tests using the intuitive graphical interface to reduce mistakes and ensure accurate certification results.

Cable ID: TEST0000		Fiber Core: 9µm	Length: 3195.541
	Fiber 1	Fiber 2	
1310nm	00.20dB	04.00dB	05.00dB
1550nm	00.00dB	01.00dB	00.00dB
1310nm	00.20dB	04.00dB	05.00dB
1550nm	00.00dB	01.00dB	00.00dB

### Review Results

Tier 1 certification results display:

- ISO/TIA/IEEE test standard
- Pass/Fail result
- dB loss of each fibre at each wavelength
- dB loss in each direction (when testing bi-directionally)
- Fibre link length
- dB margin / headroom

# LanTEK III

Certifier for  
Copper Cabling



Ordering information

Part No.	Kit Contents
<b>R161001</b>	<b>LanTEK III-500MHz – (test adapters to be ordered separately)</b> Includes 500 MHz cable certifier. TIA/EIA category 6A/ ISO Class E <sub>A</sub> . LanTEK III display/remote handsets, Li-ion battery (2), universal power adapter (2), USB cable, headset (2), hanging strap (2), quick reference guide, carry case, USB Wi-Fi adapter (1)
<b>R161002</b>	<b>LanTEK III-1000MHz – (test adapters to be ordered separately)</b> Includes 1000 MHz cable certifier. TIA/EIA category 7A/ ISO Class F <sub>A</sub> . LanTEK III display/remote handsets, Li-ion battery (2), universal power adapter (2), USB cable, headset (2), hanging strap (2), quick reference guide, carry case, USB Wi-Fi adapter (1)
<b>R161003</b>	<b>LanTEK III-500MHz – (including PL adapters)</b> Includes 500 MHz Cable Certifier. TIA/EIA Category 6A/ ISO Class E <sub>A</sub> . LanTEK III display/remote handsets, Li-ion battery (2), universal power adapter (2), USB cable, headset (2), hanging strap (2), quick reference guide, carry case, USB Wi-Fi adapter (1), permanent link adapter - R161051 (2)
<b>R161004</b>	<b>LanTEK III-1000MHz – (including PL adapters)</b> Includes 1000 MHz Cable Certifier. TIA/EIA Category 7A/ ISO Class F <sub>A</sub> . LanTEK III display/remote handsets, Li-ion battery (2), universal power adapter (2), USB cable, headset (2), hanging strap (2), quick reference guide, carry case, USB Wi-Fi adapter (1), permanent link adapter - R161051 (2)
<b>TRADE161003</b>	Trade-In of any Cat. 5 (and higher) cable tester to a LanTEK III-500MHz
<b>TRADE161004</b>	Trade-In of any Cat. 5 (and higher) cable tester to a LanTEK III-1000MHz

Optional adapters and accessories for LanTEK III

Part No.	Description
<b>R161051</b>	LT III-Cat. 6A RJ45 permanent link adapter (single)
<b>R161052</b>	LT III-Cat. 5e/6 RJ45 channel adapter (single)
<b>R161053</b>	LT III-Cat. 6A RJ45 channel adapter (single)
<b>R161054</b>	LT III-Cat. 7A TERA universal link adapter (single)
<b>R161055</b>	LT III-Cat. 7A EC7 universal link adapter (single)
<b>R161056</b>	LT III-Cat. 7A GG45 universal link adapter (single)
<b>R161057</b>	LT III-Coax adapter (single)
<b>R161063</b>	LT III-Coax calibration cable (single)
<b>R161050</b>	LT III-Cat. 6A PLA replacement tips (pair)
<b>R160050</b>	LT III-Industrial Ethernet kit

LanTEK III Careplans

Part No.	Description
<b>LANTEK-1Y</b>	Careplan – 1 year
<b>LANTEK-2Y</b>	Careplan – 2 years
<b>LANTEK-3Y</b>	Careplan – 3 years

**Included:** Standard repairs, one free calibration per year, loan tester in the unlikely event of instrument failure, on-site collection and delivery, firmware and hardware updates free of charge within the original specifications of the instrument, free technical support and LAN Careplan certificate.

# FiberTEK III

Certifier for  
Fibre Cabling



Ordering information

Part No.	Kit Contents
<b>R164005</b>	<b>FiberTEK III-MM LED Kit</b> – Includes two multimode FiberTEK III modules, lockable semi-rigid carrying case, SC, FC, ST adapters for modules (2 ea.), SC-SC patch cords, 6x 50µm MMF compliant to ISO/IEC 14763-3 standard, quick reference guide.
<b>R164006</b>	<b>FiberTEK III-SM Laser Kit</b> – Includes two single-mode FiberTEK III modules, lockable semi-rigid carrying case, SC, FC, ST adapters for modules (2 ea.), SC-SC patch cords, 6x 9µm MMF compliant to ISO/IEC 14763-3 standard, quick reference guide.
<b>R164007</b>	<b>FiberTEK III-MM LED &amp; SM Laser Kit</b> – Includes two multimode FiberTEK III modules, two single-mode FiberTEK III modules, lockable semi-rigid carrying case, SC, FC, ST adapters for modules (2 ea.), SC-SC patch cords, 6 x 9µm, 6 x 50µm compliant to ISO/IEC 14763-3 standard, quick reference guide.

FiberTEK III modules are compatible with LanTEK II.

Optional accessories for FiberTEK III

Part No.	Description
<b>R164060</b>	FT III-Set of SC, FC and ST screw-on adapters
<b>R164050</b>	FT III-Encircled Flux 50/125um cable SC - SC
<b>R164051</b>	FT III-Encircled Flux 50/125um cable SC - LC
<b>R164063</b>	FT III-Carrying Case (Single)
<b>1219-00-1621</b>	Fibre cleaning kit includes: Lint free wipes, pre-saturated wipes, cleaning swabs and zipper pouch

